

Touc

Reminder....
Kiwash Electric Cooperative's
66th Annual Meeting
Monday, May 23, 2005
6:30 p.m.

Cordell High School Auditorium
Registration Gifts Cash Prizes
Entertainment Grand Prize

When Power Goes Off

1. Check household fuses or circuit breaker box.
2. Check with neighbors to see if their electricity is off.
3. Call 1-888-832-3362 or 580-832-3361, Kiwash Dispatchers will answers 24 hours a day, 7 days a week.

KILOWATT

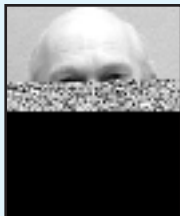
Published Monthly for the members of
 Kiwash Electric Cooperative, Inc.
 P.O. Box 100
 Cordell, Oklahoma
 www.kiwash.coop
 Dennis Krueger, Manager
 Mark Wesner, Attorney
 Editor: Lisa Willard

BOARD OF TRUSTEES

Robert Travis	President
Ralph Cunningham.....	Vice President
Stan Funkhouser.....	Secretary/Treasurer
Virginia Walker ..	Asst. Secretary/Treasurer
Directors	
Jonathan Bartel	Leslie Hinds
Rex Eagan	Jack Sawatzky

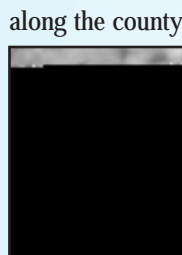
District Meetings Soon

District Meetings for three trustees have been scheduled for May 2nd, 3rd, and 5th in Districts 2, 4, and 6.



Jack Sawatzky represents District Two. Jack was appointed as trustee in September of 2004. Jack and his wife Karen make their home north of Cordell. The District Two meeting is Monday, May 2 at 8:00 pm in the Kiwash Electric Cooperative Boardroom in Cordell.

Mr. Sawatzky serves the members in the general vicinity of Bessie, beginning with the point at the NE corner of District 1, specifically the SE corner of 11-10-16, then north and west along the Washita River to the county line between Custer and Washita counties, then west



along the county line to the NW corner of 2-11-18, then south to the point of beginning.

The members in District Four are represented by Robert Travis. Mr. Travis has served as trustee since 1980, and has performed the duties of Asst. Secretary/Treasurer, Secretary/Treasurer, Vice President, and is currently serving as President of KEC's board and Secretary/Treasurer of the Oklahoma Association of Electric Cooperative's board. Robert and his wife, Karen make their home on a farm northeast of Custer City. The area he serves is in the general vicinity of Custer City, Thomas, and Putnam, and begins at a point at

the NW of 14-16-17, then south to the SE corner of 15-14-17, then east to the NE corner of 19-14-17, then south to the county line between Washita and Custer counties, then east to the SE corner of 36-12-16, then north to Interstate 40, then eastward and north, the boundary of this district to include any extensions in this section as long as these remain in the recognized districts. District Four meeting will be held in the Kiwash Custer City Warehouse Building, Tuesday, May 3rd at 6:30 p.m.

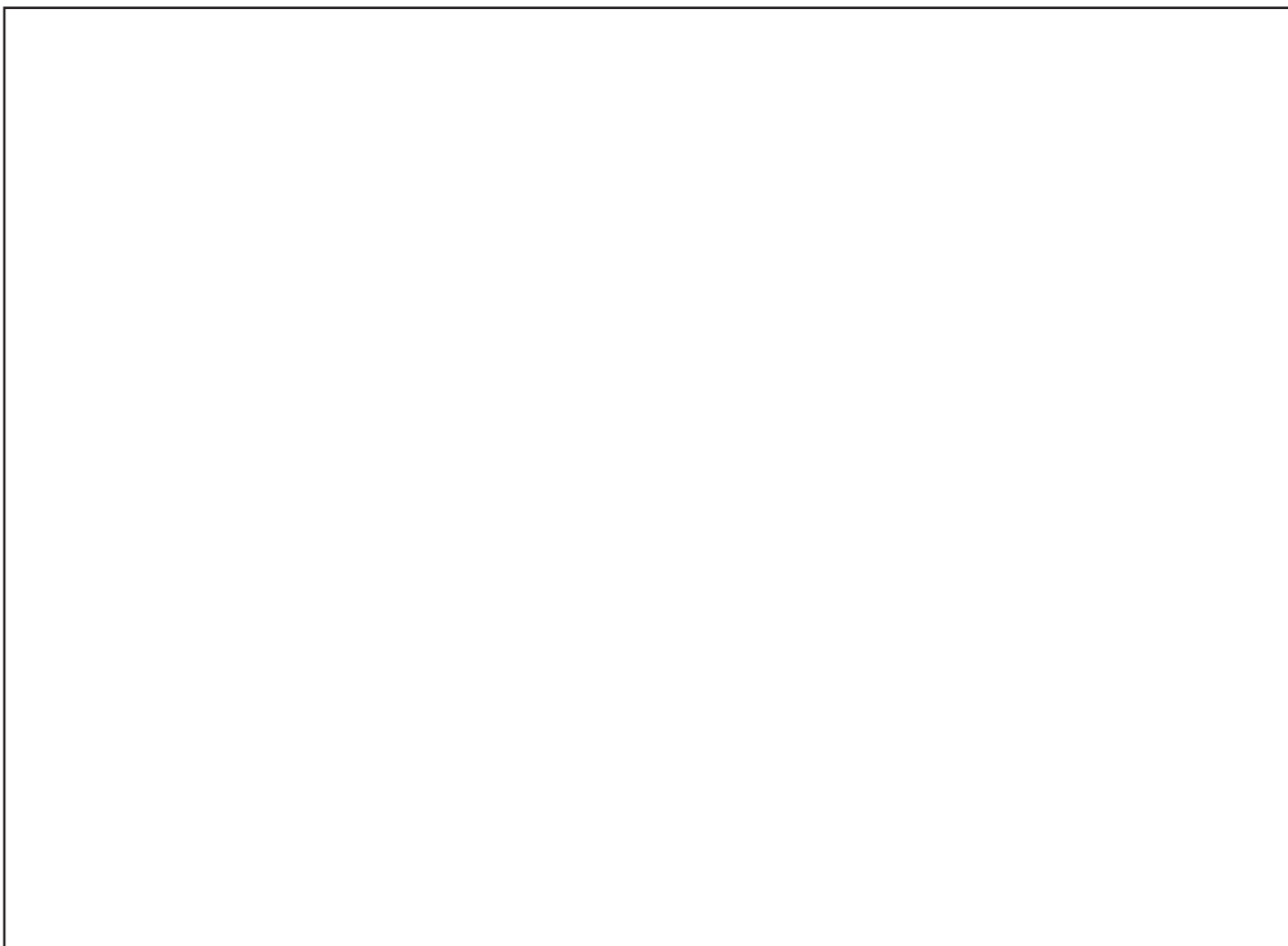


District Six members are represented by Leslie Hinds, who has served as trustee since 1968. Leslie held the office of President for a number of years. He currently serves as vice-president on the Board of Directors of Western Farmers Electric Cooperative in Anadarko. Leslie and his wife make their home south of Burns Flat. Leslie serves members in the vicinity of Dill City and Burns Flat beginning at a point on the SW corner of 35-8-21, then east to Highway 152, then northward to the SE corner of 26-9-19, then east to the SE corner of 27-9-18, then north to the NW corner of 3-11-18, then west along the county line. The west boundary of this district is limited by the lines of the Northfork Electric Cooperative. District Six meeting will be held Thursday, May 5th at 7:00 p.m. at the Western Technology Center in Burns Flat.

Meeting Purpose

The primary purpose of the district meetings is to elect a trustee to represent the members on your Cooperative's Board of Trustees. Each of the nine board district's, has member-representatives elected to manage the business affairs of Kiwash Electric Cooperative. Policies set by your Board of Trustees are carried out by the General Manager through the staff and employees of the Cooperative. These trustees of Kiwash Electric Cooperative are members of the Cooperative and pay for their electricity at the same rate as other members. They are elected to the board by the membership. As your representative, they determine policies regarding operations and help guide the growth and progress of your electric power distributor. Every member is entitled to one vote in

*See **District Meetings** next page*





Children are a part of our Electric Cooperative.

Have a voice in YOUR cooperative. Electric cooperatives are private, non-profit corporations owned by their consumer-members. Essentially, each consumer of the cooperative is a member, with one vote in the affairs of the cooperative.

As a member of Kiwash Electric Cooperative, you have the opportunity to actively participate in setting the policies and helping determine the decisions made by the Board of Directors. Because we are owned by those we serve, we encourage you to attend our Annual Meeting on Monday, May 23 at 6:30 p.m. at the Cordell High School Auditorium. Exercise your right to have a voice.

Kiwash Electric Cooperative's

66th Annual Meeting

Monday, May 23, 200

6:30 p.m.

Cordell High School Auditorium

www.kiwash.coop

Your Touchstone Energy Cooperative



Turtle Sunday Dessert

Pkg. German chocolate cake mix
1 (14-oz) pkg. caramels
1 c. (6 oz.) semi-sweet chocolate chips
1/2 c. evaporated milk
1 c. chopped pecans
6 T. margarine

Mix cake according to package directions. Set aside half of the batter, pour remaining batter into a greased and floured 13 x 9 x 2 inch baking pan. Bake at 350 for 18 minutes. Meanwhile, in a saucepan over low heat, melt the caramels, milk and oleo. Remove from heat and add nuts. Pour over cake. Sprinkle with chocolate chips. Pour reserved batter over top. Bake 20-25 minutes more or until cake springs back when lightly touched. Cool. Cut into squares. If desired, top each with a scoop of ice cream and a pecan half.



Bundle of Joy.....

Wayne and Lisa Willard announce the birth of their baby daughter, Ellie Shay. Ellie was born December 29 at Lakeside Women Hospital in Oklahoma City. Ellie weighed 6 lbs 12 oz. and was 20.5 inches long.



Big brothers Colton and Dawson are very proud of their new little sister. Ellie's mommy, Lisa, is the Director of Marketing for KEC.

KEC members, Larry and Jean Nightengale and Jerry and Kathie Willard, both of Cordell are the proud grandparents.

BULLETIN BOARD

What's Happening In Your Community

April 8-10, 15-16 – Beau Jest, Southwest Playhouse Fine Arts Center in Clinton

April 9, 10, 16, 17 – Shortgrass Playhouse Production in Hobart – Everything I Learned, I Learned in Kindergarten.

April 14 – Hobart Chamber Banquet

April 16 – Quartz Mountain Flyer Train Ride – For more information call 580-846-9078

April 22-23 - Antique Tractor Show East of Hobart on Hwy 183

April 25 – Small Grains Solutions 8am to 5:00 p.m. at the Frisco Center in Clinton. Sponsored by the High Plains Journal and John Deere. Call 1-800-452-7171 ext 1885 for more information.

KILOWATT

To report the events in your community, or for more information, call Kiwash Electric Cooperative.

1-888-832-3362