

# the Kilowatt

JANUARY 2012



published monthly for members of  
Kiwash Electric Cooperative, Inc.

A SUPPLEMENT TO OKLAHOMA LIVING

## Closed for training

Kiwash Electric Cooperative will close on Monday, January 16, 2012 for all-employee training. To report a service problem during this time, please call **888-832-3362**.



## ENERGY EFFICIENCY

### Tip of the Month

Switch to energy-saving halogen incandescent lightbulbs to cut lighting energy use by 25 percent. These bulbs last three times longer than traditional incandescent bulbs and can easily be dimmed. Light-emitting diodes (LEDs) cut lighting energy use by at least 75 percent. Learn more at [energysavers.gov](http://energysavers.gov).

U.S. Department of Energy



## BILL PAYMENT LOCATIONS

Kiwash Electric  
120 W. 1st Street  
Cordell, Oklahoma

Pay online:  
[www.kiwash.coop](http://www.kiwash.coop)

Custer City Hall  
Custer City, Oklahoma

First National Bank  
Thomas, Oklahoma

## Kiwash kicks off Youth Tour contest

### Two high school juniors could win free trip to D.C.

**K**iwash Electric employees will visit local high schools this month to promote interest in the 2012 Rural Electric Youth Tour. Kiwash will sponsor two high school juniors to attend Youth Tour, a one week, all expenses paid trip to Washington D.C.

Youth Tour delegates visit numerous historic sites, museums, memorials,

cathedrals and cultural attractions in and around Washington D.C. They also learn about government, rural electrification, leadership and democracy while making new friends that will last a lifetime.

Kiwash Electric Youth Tour winners are selected based on quiz scores and a brief personal interview. The quiz tests their knowledge of electric cooperatives. Four top-scoring

finalists are invited to a special banquet where they are interviewed by Youth Tour judges. Winners are announced at the conclusion of the banquet.

Youth Tour application forms and resource information will be delivered to local high schools this month. For more details, please visit [www.youthtour.coop](http://www.youthtour.coop), or contact Lisa Willard at **888-832-3362**.

## meet our MINI MEMBERS

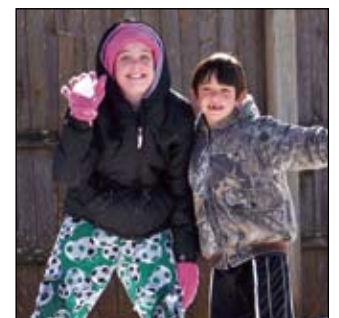
Share pictures of your "mini members" in the *Kiwash Kilowatt*. Our theme for February is "Puppy Love." Please send photos by January 10, 2012 to Mini Members, Kiwash Electric Cooperative, 120 W. 1st Street, Cordell, OK 73632, or email images to [lwillard@kiwash.coop](mailto:lwillard@kiwash.coop). Please include your name, phone number, children's names, parent's names, and hometown. If possible provide a few details about the photo. Sorry, images cannot be returned.



Above, Rhett Putman and Drayton Maddox. Rhett is the son of Robert and Wendy Putman, Cordell. Drayton is the son of Danny and Karissa Maddox, Merritt.



From left, Gage Miller, son of Bill and Amie Miller; Dawson Willard, son of Wayne and Lisa Willard; Raydon Kuehne, son of Rob and Nikki Kuehne; Ellie Willard, daughter of Wayne and Lisa Willard; and Kray Rogers, son of Kale and Jana Rogers; all from Cordell.



Kaitlin Kuehne and Raydon Kuehne enjoy the snow. Their parents are Nikki and Rob Kuehne of Cordell.

INSIDE YOUR CO-OP



A Touchstone Energy  
Cooperative

**KIWASH ELECTRIC  
COOPERATIVE, INC.**

*Providing the service  
that lights up your life.*

**Office Location**

PO Box 100  
120 W. 1st Street  
Cordell, Oklahoma

(888) 832-3362  
[www.kiwash.coop](http://www.kiwash.coop)

 Find us  
on Facebook

**STAFF**

Dennis Krueger  
MANAGER

Gene Smith  
DIRECTOR OF  
FINANCE

Lisa Willard  
DIRECTOR OF  
COMMUNICATIONS

Roy Dewees  
DIRECTOR OF  
OPERATIONS

**BOARD OF TRUSTEES**

**OFFICERS**

Jack Sawatzky  
PRESIDENT

Robert Travis  
VICE PRESIDENT

Virginia Walker  
SEC.-TREASURER

John Schaufele  
ASST. SEC.-TREASURER

**DIRECTORS**

Ralph Cunningham  
Leslie Hinds  
Rex Eagan



**By Dennis Krueger**  
GENERAL MANAGER

# Keeping our communities strong

## Revolving loan program helps local businesses grow

**K**iwash Electric has always believed that we have an obligation to our membership that goes beyond simply selling electricity. Since the 1930s the board of directors and management of Kiwash Electric has had a strong sense of community. We recognize that our members expect us to be good neighbors and our commitment to our membership and the land that we serve has always been strong.

Although many of our members may not be aware of it, Kiwash Electric Cooperative is actively involved in new job creation and job retention in our service territory. Seventeen years ago Kiwash began a revolving loan fund for the purpose of economic development. This loan fund is based on a federal application through USDA Rural Development. The program is known as the Rural Economic Development Loan and Grant program, or REDL&G.

Through REDL&G, a matching grant allows new federal grant funds to be intertwined with local funds to create a re-lending loan program.

To date, Kiwash has worked with municipalities, industries, and business leaders to create over 120 jobs in our six-county region. These loans have diversified the job base and improved the overall economy of west-central Oklahoma. Projects funded by this revolving loan fund have built vital infrastructure, improved factories, helped new businesses open, and renovated existing retail establishments.

Kiwash is interested in lending to existing or start up businesses or industries that are creating new jobs for western Oklahoma. New job or job retention is a major factor in determining an eligible entity. These loans must be structured in such a manner that mortgage rights for land, building and/or permanent equipment is incorporated within the loan application. Loan interest rates are factored based on New York prime lending rates, and terms of loan will be based on collateral offered.

This program was established to complement the lending abilities of local banks as well as provide

a competitive advantage for our local companies. Kiwash is willing to work cooperatively with local bankers and business leaders to find the best solution to their financing requirements. We believe there is a small niche market in which Kiwash Electric's revolving loans can assist to create new jobs and diversify our local economy. Additional information and loan applications can be found at [www.kiwash.coop](http://www.kiwash.coop) under the Economic Development section.

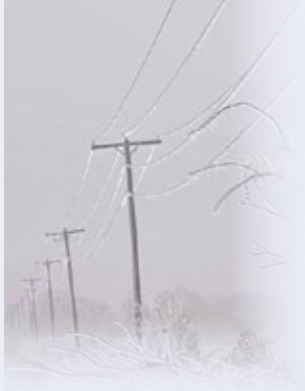
One of the seven principles guiding Kiwash Electric Cooperative for the last 73 years is "concern for community." In other words, Kiwash Electric works for sustainable development of our communities through polices accepted by our members. We believe the Kiwash revolving loan fund is just one of the ways we keep our communities sustainable.

*Talk to Kiwash Electric about financing your startup or expansion.*

## We'll help your business take the next step.

Kiwash Electric's revolving loan fund helps finance startup businesses and existing businesses in western Oklahoma. Revolving loan funds may be used to build infrastructure, improve factories, renovate existing businesses or fund new ventures. Cooperative memberships is not required. Give us a call at **888-832-3362**, or visit [www.kiwash.coop](http://www.kiwash.coop) for details and loan applications.





## Prepare now for winter storms

### Stock your home with an emergency outage kit

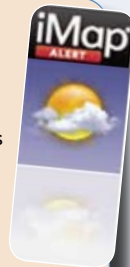
It's hard to predict the weather, but it's easy to prepare for it. Here's how to plan ahead for unavoidable power outages that can accompany winter storms.

- Listen to weather forecasts every day so you'll know when high winds or heavy snows or ice are on the way. That kind of winter weather is most likely to affect power lines
- Prepare an outage kit that contains: a battery-powered radio, fresh batteries, a flashlight, candles, matches, a wind-up clock, bottled water, and paper plates and plastic utensils.
- Keep a stock of canned food in your cupboard, along with a manual can opener. Consider buying a camp stove and fuel that you can use (outdoors only, please) if you can't cook on your electric stove.
- Tape Kiwash Electric's phone number (**888-832-3362**) and your co-op account number on your refrigerator so it will be handy if you must report an outage.
- Pile a few extra blankets and sweaters together so you can find them easily if the heat goes off. Dress in layers to stay warm.
- Teach children to stay away from fallen or sagging power lines. They could be energized and dangerous, even if the power is out.

If a major outage occurs, please remember Kiwash Electric will restore your service as quickly as possible. Your cooperation and patience are appreciated.

### When bad weather moves your way... IMap Weather Alerts keep you posted

Kiwash Electric's free IMap Alerts deliver emergency weather bulletins to you via email or text message, so you'll know what to expect while at home, at work or on the road. The alerts also include updates from your co-op during emergency situations, seven day forecasts delivered to your email box, and detailed weather information. Download the free IMap Alert application from your co-op website at [www.kiwash.coop](http://www.kiwash.coop).



## Recipe Box

### Ham and Potato Soup



#### INGREDIENTS

- 3 1/2 cups peeled and diced potatoes
- 1/3 cup diced celery
- 1/3 cup finely chopped onion
- 3/4 cup diced cooked ham
- 3 1/4 cups water
- 2 T. chicken bouillon granules
- 1/2 tsp. salt, or to taste
- 1 tsp. ground white or black pepper, or to taste
- 5 T. butter
- 5 T. all-purpose flour
- 2 cups milk

#### DIRECTIONS

Combine potatoes, celery, onion, ham and water in a stock pot. Bring to a boil, then cook over medium heat until potatoes are tender, about 10 to 15 minutes. Stir in the chicken bouillon, salt and pepper.

In a separate saucepan, melt butter over medium-low heat. Whisk in flour with a fork, and cook, stirring constantly until thick, about 1 minute. Slowly stir in milk as not to allow lumps to form until all of the milk has been added. Continue stirring over medium-low heat until thick, 4 to 5 minutes.

Stir the milk mixture into the stockpot, and cook soup until heated through. Serve immediately.

Yield: 8 servings.

## Choose the payment option that's right for you.

Kiwash Electric offers several payment options including online bill payments, automatic draft, or pay by phone, mail or in person using a credit card or personal check. We also offer payment plans such as our *\*Average Monthly Payment Plan* that will help you avoid seasonal highs and lows. For complete details, please visit us online at [www.kiwash.coop](http://www.kiwash.coop) or call **888-832-3362**.

\*Certain restrictions apply.



PLAY IT SAFE

# Using gas? Get CO alarms

*Small device ensures safety all year*

If your home has a fireplace or any gas appliances, make sure you install carbon monoxide alarms in or near every bedroom.

The CO alarm will react when it senses that carbon monoxide levels in your house are too high, usually because an appliance is malfunctioning. CO alarms do not detect gas leaks.

Here are eight tips for ensuring your CO alarm works when you need it:



1. Replace your alarms every five years. Most warranties cover only five years.
2. Replace your batteries at least once a year or when the device starts making a "chirping" sound. That's usually a symptom of a low battery.
3. Test the alarm regularly by pressing the "test" button and holding it down for 20 seconds.
4. Locate CO alarms at least 10 feet away from sources of humidity like showers and bathrooms, where steam can cause them to overreact.
5. Place a CO alarm on every level of the house and at the top of the basement stairs, even if there are no bedrooms on those floors.
6. Do not put a CO alarm in the garage, kitchen or the room with your gas furnace.

7. If your alarm goes off too often, it probably means it's too close to a fireplace or a gas furnace or stove. It also could mean that your gas appliances are not burning the fuel completely. If you see a yellow or orange pilot light, that could be the case. Call a plumber to check it out.

8. Leave the alarm plugged in all year, not just during heating season. Your gas stove, clothes dryer and water heater also are potential sources of CO leaks. And a running car in the garage can cause a CO problem in the home

For more safety tips, please visit [www.safeelectricity.org](http://www.safeelectricity.org), or contact your co-op at **888-832-3362**.



Weekend eagle watch programs at Quartz Mountain Nature Park take place in January and February.

## COMING UP

*in Kiwash Country*

### ■ JANUARY

- 7-8 Quartz Mountain Eagle Watch  
Quartz Mountain Nature Park Group  
Camp, Lone Wolf, 580-563-2238  
or 405-319-8380
- 16 Martin Luther King Day
- 16 Kiwash Electric Cooperative closed for all-employee training.
- 21-22 Quartz Mountain Eagle Watch  
Quartz Mountain Nature Park Group  
Camp, Lone Wolf, 580-563-2238  
or 405-319-8380
- 25 SWOSU Panorama Series presents Justin Kredible, comedian/magician. Contact SWOSU business office for tickets.

### ■ FEBRUARY

- 4 German Feast and Auction  
208 N. Reimer, Corn
- 4-5 Quartz Mountain Eagle Watch  
Quartz Mountain Nature Park Group  
Camp, Lone Wolf, 580-563-2238  
or 405-319-8380
- 9-10 SWOSU Jazz Festival, Weatherford  
580-774-3063 or 580-774-3708
- 14 St. Valentine's Day

## THE **BEST** GERMAN FOOD

*German Feast and Auction*

**February 4, 2012 • Corn Bible Academy**

Enjoy delicious Verenika smothered in onion gravy, zwiabach, smoked sausage, cherry mousse, new year's cookies.

Auction items for everyone—furniture, farm supplies and service, quilts, tools, homemade food goods, and jellies.

*Please call for more information:*

**580-343-2262**

[www.cornbible.org/giving\\_opportunities/german\\_feast.html](http://www.cornbible.org/giving_opportunities/german_feast.html)

### SUBMISSION DETAILS:

Kiwash Electric Cooperative promotes local festivals, rodeos, fairs and other events in our monthly newsletter, the *Kilowatt*. Calendar listings are free.



Please send details to: Lisa Willard, Kiwash Electric, PO Box 100, Cordell, OK 73632, or send e-mail to: [lwillard@kiwash.coop](mailto:lwillard@kiwash.coop). Please send event listings by the 10th of the month prior to publication.

If you have questions about submitting an event, or need to speak with a Kiwash representative about other matters, please call **888-832-3362**, or visit [www.kiwash.coop](http://www.kiwash.coop).